

Downtown Flagler Street Beautification Project

Recap of work done in the month of May 2024

Construction Recap: April 2024

Phase C (E 2nd Ave to 1st Ave)

- Repairing spalls on the trench drain in various locations (Punch list items).
- Repairing sidewalk pavers in various locations. (Punch list items).
- Watering oak and palm trees.
- Removing graffiti from bollards.
- Spreading polymer sand sidewalk brick pavers in various locations.
- Grading sidewalk material in various locations.
- Performed mockup for alternative material on sidewalk.
- Demo curb ramp on the NE & SE corner of 1st Ave.
- Loading & hauling removed material.
- Excavated material around S-38 and exposed drainage outlet for S-38.
- Unloaded 24” drainage pipe for drainage system S-34 to S-38.
- Excavating material to install 24” pipe from S-38 to S-34A.
- Removed existing light pole on the NE corner of 1st Ave.
- Installed 17 LF of 24” pipe from S-38 to storm structure.
- Sealed drainage pipe (outside) to S-38.
- Backfilled drainage pipe.
- Backfilled S-38 drainage pipe trench with sand.
- Placed 7CY of excavatable flowable fill for S-38 drainage pipe, Sealing drainage pipe inside of S-38.
- Backfilled S-38 drainage area with lime rock material.
- Placed concrete to harmonize sidewalk to Flagler First Condominiums.

Phase D (E 1st Avenue Intersection)

- Spreading polymer sand on sidewalk and roadway brick pavers in various locations (Punchlist).
- Closed road on 1st Ave and Flagler St. Installed detour and road closed signs per TCP.
- Exposed manhole that was paved over on the NE corner of 1st Ave.
- Saw cutting asphalt pavement on NW corner of 1st Avenue.
- Excavated material to install drainage structure S-32.
- Installed drainage structure S-32.
- Exploratory soft digs further West due to underground utility conflict.
- Installed steel roadway plates.
- Exploratory digging from S-34 to S-31.
- Exposed duct bank and removed sidewalk by S-31.
- Excavating material N of S-34.
- Installed 15" HDPE pipe from S-34 to S-32.
- Sealed drainage pipe to drainage structures S-34 & S-32.
- Backfilled 15" HDPE pipe from S-34 to S-32.
- Excavating material between drainage structures S-38 & S-34.
- Removed drainage structure S-34A.
- Repairing spalls on the trench drain in various locations (Punch list items).
- Installing tree grates in various locations (Punch list item).
- Repairing sidewalk and roadway pavers (Punchlist).
- Relocated LCD on sidewalk due to overhead hazard.
- Sealing light base (Punchlist).
- Organized stockpile of brick pavers.
- Maintained privacy screen on chain link fence section D.
- Grading material in planter area.
- Sealing base of hardscape furniture.
- Removed concrete from manhole lid.
- Milling asphalt pavement.
- Loading and hauling debris.

Phase C (E 2nd Ave to 1st Ave)

- Removing existing sidewalk tile





Phase D (E 1st Ave to N Miami Ave)

- Preparing area for alternate material mockup

Phase C (E 2nd Ave to 1st Ave)
• Alternative material mockup





Phase C (E 2nd Ave to 1st Ave)
· Watering landscaping



- Closure of E 1st Ave Intersection

E 1st Avenue Intersection

- Removing existing streetlight





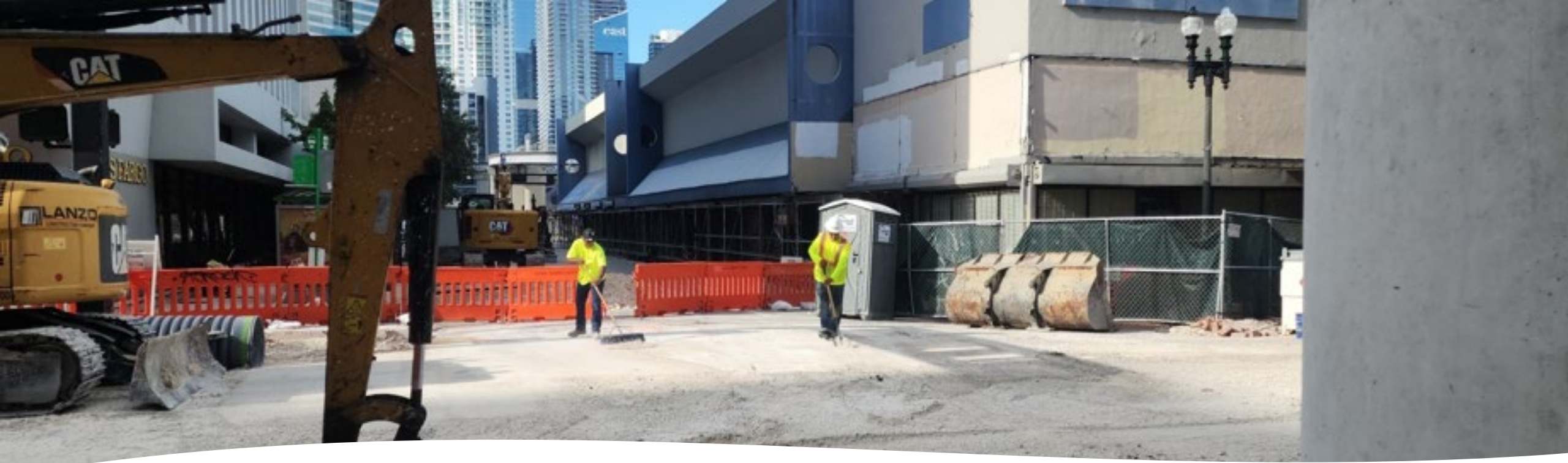
E 1st Avenue Intersection

- Sealing 24" HDPE drainage pipe to drainage structure S-38.

E 1st Avenue Intersection

- Removal of curb ramp on the southeast corner





E 1st Avenue Intersection

- General clean up and dust control, preparation for excavations



E 1st Avenue Intersection

- Removal of sidewalk

E 1st Avenue Intersection

- Loading and hauling removed earthwork materials





E 1st Avenue Intersection

- Saw cutting asphalt pavement for removal

E 1st Avenue Intersection

- Excavating material to install drainage structures S-32





E 1st Avenue Intersection

- Saw cutting asphalt pavement for excavation

- E 1st Avenue Intersection**
- Installing drainage structure S-32





E 1st Avenue Intersection

- Installing 15" HDPE drainage pipe between S-34 and S-32

E 1st Avenue Intersection

- Sealed 15" HDPE drainage pipe to drainage structure S-32





Phase D (E 1st Ave to N Miami Ave)

- Sealing roadway pavers with polymeric sand



Phase D (E 1st Ave to N Miami Ave)

- Repairing sidewalk pavers in the deterrent area