

Downtown Flagler Street Beautification Project

Recap of work done in the month of December 2023

Milestones achieved in December 2023

Phase A (Biscayne Blvd. to E 2nd Ave)

- Foundation installation for new pedestrian railing at NW corner of intersection.

Phase C (E 2nd Avenue to 1st Avenue)

- Partial demolition of existing sidewalk on the north and south of Flagler Street, work still ongoing.
- Partial installation of new sidewalk, on the north and south of Flagler Street, work still ongoing.
- Ongoing installation of Palm trees.
- Installation of furniture foundations.
- Completed installation of trench drain.
- Installation of raisers for drainage structures.
- Installation of decorative rails on sidewalks.
- Patching inside drainage structures.
- Grate installation for trench drain.

Phase D (E 1st Avenue to N Miami Avenue)

- Pulled wires and installation of luminaires for light poles.
- Lighting pull box installation.
- Cad-welds installation inside the pull boxes.
- Installation of rocks in pull boxes for lighting system.
- Installation of ground rods for the lighting system.
- Roadway paver installation.

Phase A (Biscayne Blvd to E 3rd Ave)
Excavation for pedestrian railing





Phase A (Biscayne Blvd to E 3rd Ave)

Preparation for concrete pour for the pedestrian railing foundation.



Phase A (Biscayne Blvd to E 3rd Ave)
Foundation concrete pour

Phase C (E 2nd Ave to 1st Ave)
Patching inside drainage





Phase C (E 2nd Ave to 1st Ave)
Patching inside drainage structure

Phase C (E 2nd Ave to 1st Ave)
Adjusting the slope of the
valet parking area



Phase C (E 2nd Ave to 1st Ave)
Installation of benches



Phase C (E 2nd Ave to 1st Ave)
Installation of grates for trench drain





Phase D (E 1st Ave to N Miami Ave)
Installation of roadway pavers

Phase D (E 1st Ave to N Miami Ave)

Installation of roadway pavers

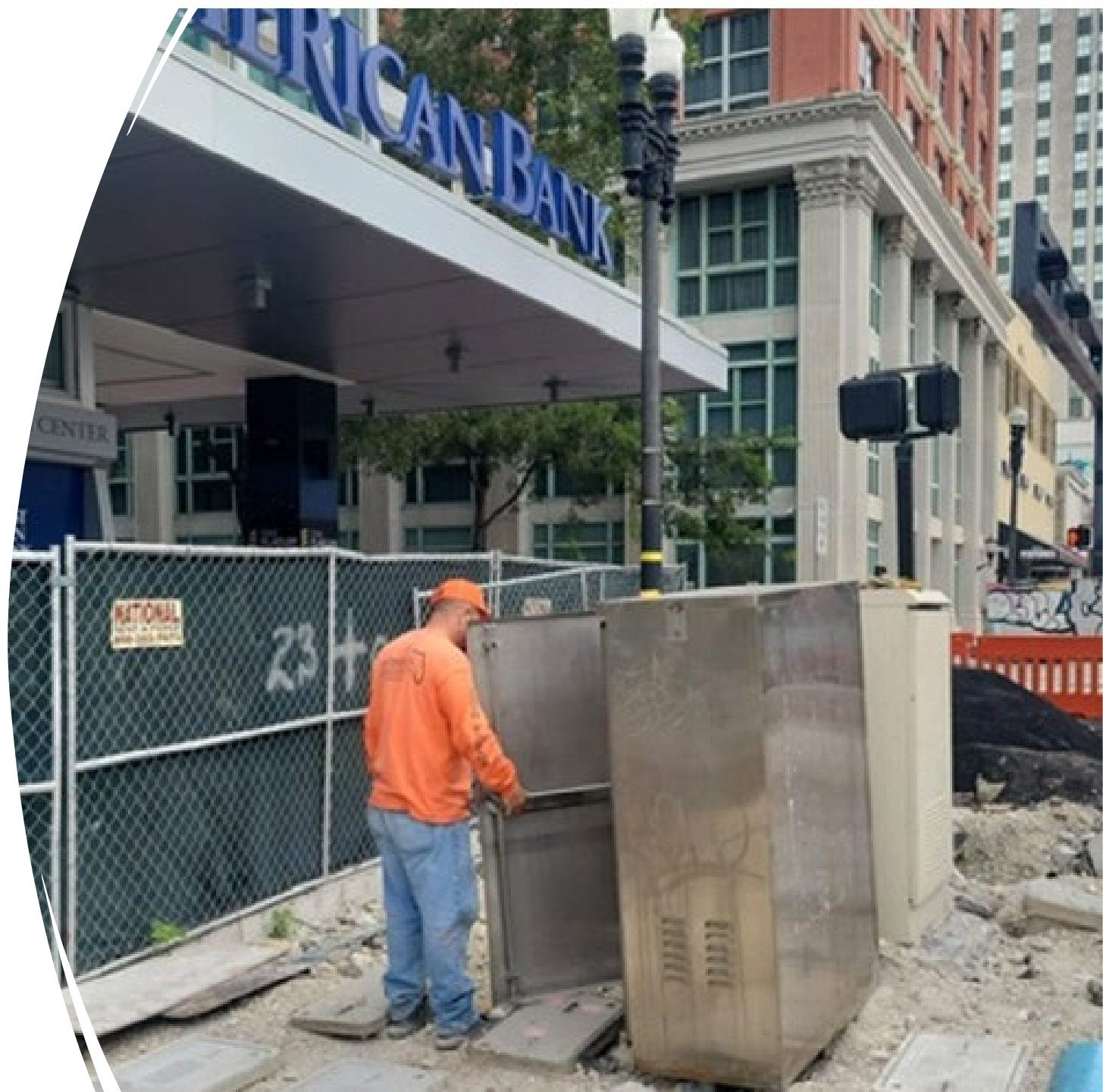




Phase D (E 1st Ave to N Miami Ave)
Installation of ground rods for lighting system

Phase D (E 1st Ave to N Miami Ave)

Replacing photocells inside
control cabinet for lighting system





Phase D (E 1st Ave to N Miami Ave)
Splicing wires inside the pull boxes
for the lighting system