

# Downtown Flagler Street Beautification Project

Recap of work done in the month of February 2024

# Milestones achieved in February 2024

## **Phase A** (Biscayne Blvd to E 3<sup>rd</sup> Ave)- Substantial Completion

- Punch List items still pending.
- Foundation completed and concrete poured for pedestrian railing.
- Installed sidewalk pavers and pavers in deterrent area on the NW corner of Biscayne Blvd.

## **Phase B** (E 3<sup>rd</sup> Avenue to E 2<sup>nd</sup> Ave)- Substantial Completion

- Punch List items still pending.
- Replaced detectable warning pavers.

## **Phase C** (E 2<sup>nd</sup> Ave to 1<sup>st</sup> Ave)

- Installed roadway way pavers.
- Installed sidewalk pavers.
- Installed hard scape furniture.
- Installed sidewalk tiles for businesses.
- Placed organic material for landscaping.
- Placed concrete for trench drain tie in.
- Placed concrete for tree pit grate footer.
- Placed concrete for black bands on sidewalk.

## **Phase D** (E 1<sup>st</sup> Ave to N Miami Ave)

- Excavating for tree pits.
- Installing oak trees.
- Installed streetlight poles.
- Installed luminaries on to street light poles.
- Installed conduits for streetlight poles.
- Installed conduit for receptacles.
- Demo sidewalk on North side.
- Installed PVC pipe for roof drain.



---

### Phase A (Biscayne Blvd to E 3<sup>rd</sup> Ave)

- Installed sidewalk pavers and pavers in deterrent area on the NW corner of Biscayne Blvd.

Phase A (Biscayne Blvd to E 3<sup>rd</sup> Ave)

- Grading material and installed sidewalk pavers.





---

**Phase A** (Biscayne Blvd to E 3<sup>rd</sup> Ave)

- Placed concrete for curb ramp on the NW corner of Biscayne Blvd.



**Section C (E 2<sup>nd</sup> Ave to E 1<sup>st</sup> Ave)**

- Installed detectable warning pavers for crosswalk.



---

## Section C (E 2<sup>nd</sup> Ave to E 1<sup>st</sup> Ave)

- Placed concrete for black bands on sidewalk.

## Section C (E 2<sup>nd</sup> Ave to E 1<sup>st</sup> Ave)

- Installing hardscape furniture.







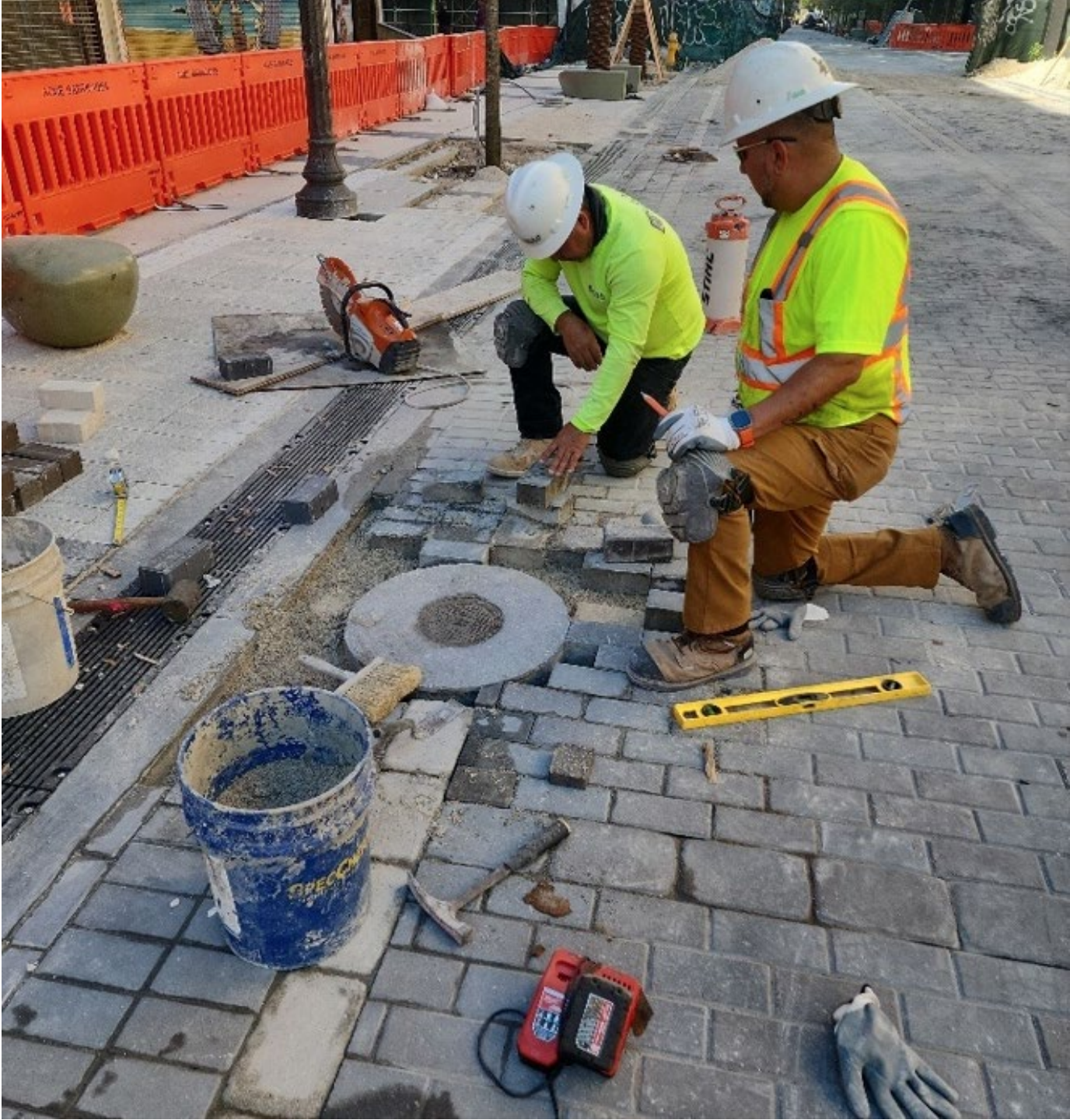
**Section C (E 2<sup>nd</sup> Ave to E 1<sup>st</sup> Ave)**

- Installed twisted bollards.



**Section C (E 2<sup>nd</sup> Ave to E 1<sup>st</sup> Ave)**

- Installed roadway pavers.





**Section C (E 2<sup>nd</sup> Ave to E 1<sup>st</sup> Ave)**

- Preparation of valet area.

**Section C (E 2<sup>nd</sup> Ave to E 1<sup>st</sup> Ave)**

- Placed concrete for tree grate footer.





---

## Section C (E 2<sup>nd</sup> Ave to E 1<sup>st</sup> Ave)

- Installed sidewalk pavers in deterrent area.



## Section C (E 2<sup>nd</sup> Ave to E 1<sup>st</sup> Ave)

- Installed sidewalk tiles for businesses.

## **Section C (E 2<sup>nd</sup> Ave to E 1<sup>st</sup> Ave)**

---

- Installed filter fabric and tree grate.





---

## Section C (E 2<sup>nd</sup> Ave to E 1<sup>st</sup> Ave)

- Grading material and installing forms for tree grate footer.



---

## Phase D (E 1<sup>st</sup> Ave to N Miami Ave)

- Excavating material for tree pits.





## Phase D (E 1<sup>st</sup> Ave to N Miami Ave)

---

- Installed Oak trees on northside of Flagler Street.



---

## Phase D (E 1<sup>st</sup> Ave to N Miami Ave)

- Saw cutting sidewalk in preparation of sidewalk demolition.

---

## Phase D (E 1<sup>st</sup> Ave to N Miami Ave)

- Installing forms for trench drain tie in.





## Phase D (E 1<sup>st</sup> Ave to N Miami Ave)

---

- Installation of street light poles.