



Downtown Flagler Street Beautification Project

Recap of work done in the month of October 2023

Milestones achieved in October 2023

Phase B (SE 3rd Avenue to E 2nd Avenue)

- Irrigation System Fixed for Trees

Phase C (E 2nd Avenue to 1st Avenue)

- Partial demolition of existing sidewalk on the north and south sides of E Flagler St.
- Partial installation of the new sidewalk on the north and south sides of E Flagler St.
- Partial installation of palm trees.
- Concrete pour of tree bands.
- Excavation for last segment of trench drain.
- Preparation of last concrete slab pour for roadway.

Phase D (E 1st Avenue to N Miami Avenue)

- Removal of existing light poles.
- Installation of new light poles.
- Roadway clearing & grubbing
- Installation of smart city and lighting conduit
- Lighting pull box installation



Phase C (E 2nd Ave to 1st Ave)

- Installing barricades in preparation for concrete pour.

Phase C (E 2nd Ave to 1st Ave)

- Preparation for concrete pour for the sidewalk on northside of Flagler Street.





Phase C (E 2nd Ave to 1st Ave)

- Installation of dark bands for the sidewalk.

Phase C (E 2nd Ave to 1st Ave)

- Grading in preparation for the installation of pavers.





Phase C (E 2nd Ave to 1st Ave)

- Pouring concrete for the sidewalk.



Phase C (E 2nd Ave to 1st Ave)

- Pouring concrete for the sidewalk on the southside of Flagler Street.

Phase C (E 2nd Avenue to 1st Avenue)

- Pouring concrete for the sidewalk.





Phase C (E 2nd Ave to 1st Ave)

- Working on the FPL's vault in preparation to pour sidewalk concrete on southside of Flagler Street.



Phase C (E 2nd Ave to 1st Ave)

- Sealing the joints inside the drain well.

Phase C (E 2nd Ave to 1st Ave)

- Building the riser for the drain well.





Phase C (E 2nd Ave to 1st Ave)

- Continued the installation of the decorative rail.

Phase C (E 2nd Ave to 1st Ave)

- Installation of the last segment of trench drain.





Phase C (E 2nd Ave to 1st Ave)

- Worked preparing for the installation of the last segment of trench drain.



Phase C (E 2nd Ave to 1st Ave)

- Received the palm trees.

Phase C (E 2nd Ave to 1st Ave)

- Installation of the palm trees.





Phase D (E 1st Ave to N Miami Ave)

- Excavating for the installation of light poles.

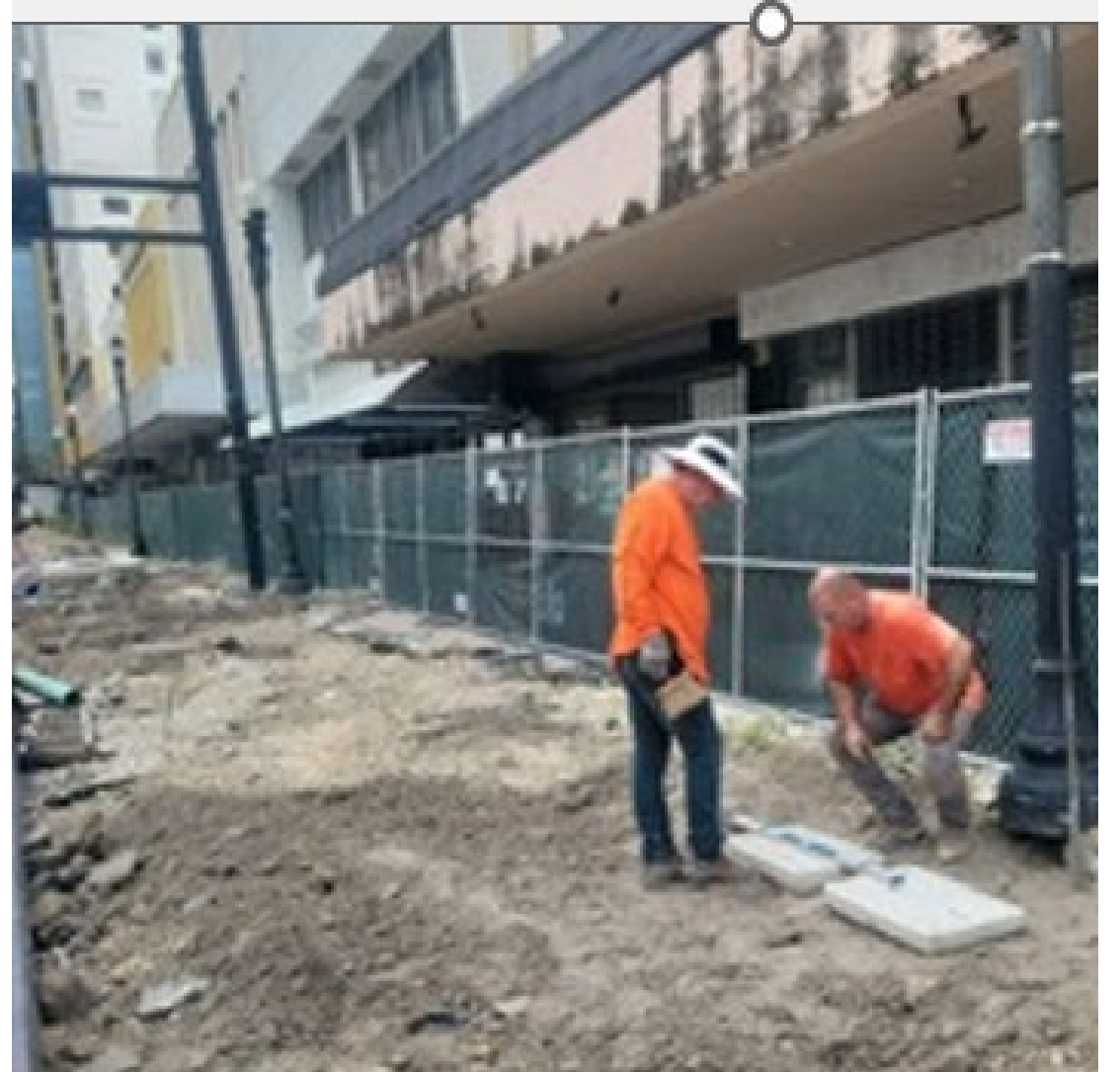
Phase D (E 1st Ave to N Miami Ave)

- Excavation for the installation of lighting poles.



Phase D (E 1st Ave to N Miami Ave)

- Installing pull boxes for the lighting system.





Phase D (E 1st Ave to N Miami Ave)

- Installation of the steel reinforcement for the concrete slab.



Phase D (E 1st Ave to N Miami Ave)

- Compacting the base for the concrete slab pour.



Phase D (E 1st Ave to N Miami Ave)

- Preparing for the pour of the concrete slab.



Phase D (E 1st Ave to N Miami Ave)

- Pouring concrete for the concrete slab.



Phase D (E 1st Ave to N Miami Ave)

- Concrete slab pour.