

# Downtown Miami Venues



June 2023

**DWNTWN**  
MIAMI™







DOWNTOWN MIAMI VENUES

---









## 601

Featuring panoramic waterfront views of Biscayne Bay and Downtown Miami, our two-level venue features unique event spaces, private lounges, dining rooms and outdoor cabanas with a contemporary design, making 601 a desirable function space for social and corporate events.

From classic to trendy, lavish to casual, our team at 601 can deliver the ultimate dining experience for parties of 50 to 1,200. With customizable menu planning featuring both Chef Table and Plated Dinners. Our Daytime menus include specialties like breakfast and brunch favorites from an Eggs Benedict Station to an All American Breakfast Table with lunch options including quick Boxed Lunches to Latin Tables and Market Salad Stations. Our Dinner options range from Chef Tables to full Plated dinners and are sure to elevate any event, with options from Miso-Glazed Salmon, Braised Short Rib and Filet Mignon to Live Action Paella Stations and Gourmet Mac and Cheese Stations. Give us a call, let's plan something amazing!

### Specs:

	Area	Theater Capacity	Banquet Capacity	Classroom Capacity	Reception Capacity
Tumbler Bar	1367 SqFt				
Decanter Bar	1,441SqFt				
Dining Room (Bayview)	2,759 SqFt	100	100		100
Dining Room (City Lights)	2,228 SqFt	200	120		200
Lower Level Dining (Combined)	5,006 SqFt		220		
Bayview Patio	1,556 SqFt				
Cabana 601	2,146 SqFt				

601 Biscayne Blvd, Miami, FL 33132 | 786.777.1601 | 601miami.com

**Contact:** Joe DeSimone, Senior Restaurant Manager | JDeSimone@LevyRestaurants.com

Special events / corporate functions: Courtney Hargreaves, 601 Senior Sales Manager | Book601@HEAT.com

Marketing / media inquiries: Michelle Artimez, Culinary Marketing Manager | Michelle.Artimez@HEAT.com



## Adrienne Arsht Center for the Performing Arts

From opera to Broadway, dance to drama, symphonic to pop concerts, cabaret to comedy, jazz to world music and beyond, this center, which is currently celebrating its 10th anniversary season, is home to the greatest artists and productions from around the world. With three state-of-the-art theaters: the 2,400-seat Ziff Ballet Opera House, the 2,200-seat Knight Concert Hall, and the intimate Carnival Studio Theatre; the beautiful Thompson Plaza for the arts, designed as a perfect stage for outdoor performances; a street-level lounge housed inside a historic Art Deco Tower and a full-service upscale restaurant inside the Ziff Ballet Opera House, this is a premiere showcase for the performing arts and all types of events.

1300 Biscayne Blvd, Miami, FL 33132 | 786.468.2023 | [www.arshtcenter.org](http://www.arshtcenter.org)

**Contact:** Wendy DeLuca | [wdelucca@arshtcenter.org](mailto:wdelucca@arshtcenter.org)



## Specs:

	Area	Theater Capacity	Banquet Capacity	Classroom Capacity	Reception Capacity
<b>Ziff Ballet Opera House</b>		2,300			
Next Generation Green Room	1,038 SqFt	80	60		150
Peacock Foundation Studio	4,080 SqFt	250	200		300
Adams Foundation Lobby	8,770 SqFt		300		600
Terra Group Patron Salon	704 SqFt	77	50		120
Main Stage	9,083 SqFt	1,000	480		950
Backstage	4,901 SqFt	545	250		520
Sidestage	4,151 SqFt	475	300		420
Full Stage (main/back/side combined)	18,135 SqFt	2,000	1,000		1,800
Carnival Studio Theater	4,012 SqFt	200	200		200
Studio Theater Lobby	1,227 SqFt				140
Thomson Plaza for the Arts	4,800 SqFt	500	380		700
<b>Knight Concert Hall</b>		2,200			
Concert Hall Stage	4,088 SqFt	444	250		421
Festival Floor			400		
Joyce & M. Anthony Burns Green Room	800 SqFt	88	60		100
Peacock Education Center (A&B)	3,479 SqFt	200	200		200
Ryder System Inc Lobby	7,848 SqFt		250		400
Ambassador & Mrs. Paul J. Cejas Patron Salon	816 SqFt	60	50		130
Bayview Room	950 SqFt	100	60		80



## Kaseya Center

Since its spectacular grand opening on December 31, 1999, the Kaseya Center—South Florida's Waterfront Showplace and proud home to the 2006, 2012 and 2013 NBA Champion Miami HEAT—has become one of the nation's premier facilities in sports and entertainment and a center of activity in South Florida. Built with state-of-the-art sound and lighting and HD and electronic media signage inside and out, the impressive 19,600-seat Arena ranks among the nation's top 10 venues annually for total ticket sales and among the top 5 for Latin entertainment.

601 Biscayne Blvd, Miami, FL 33132 | 786.777.1464 | [Kaseyacenter.com](http://Kaseyacenter.com)

Contact: Elizabeth Roca | [eroca@heat.com](mailto:eroca@heat.com)



## Specs:

	Area	Theater Capacity	Banquet Capacity	Reception Capacity
Area-Basketball	6,840 SqFt	19,600	1,200	2,000
Arena-End Stage	17,000 SqFt	14,000	500	750
Arena Floor (Banquet)	17,000 SqFt	2,000	1,200	2,000
Waterfront Theater	8,500 SqFt	5,000	200	500
Bacardi Ocho Lounge	7,600 SqFt	200	250	400
Kaseya Center Lounge- North	3,617 SqFt	50	100	200
Kaseya Center Lounge - South	3,205 SqFt	50	80	200
Hyde Lounge	1,400 SqFt	30	50	230
East Plaza	33,254 SqFt	500	2,000	2,500
South Plaza	26,580 SqFt	500	2,000	2,500



## Alfred I. Dupont Building

The Historic Alfred I. Dupont Building is equipped with numerous amenities for your guests including separate and unique wings for cocktail hour and dinner service, no time or sound restrictions, access via a dramatic marble staircase, brass-lined escalator and original bas-relief elevators, air conditioning, and 24-hour security. We offer up to 20,000 square feet for special events, and are capable of holding from the most intimate to the grandest groups.

### Specs:

	Area	Theater Capacity	Banquet Capacity	Classroom Capacity	Reception Capacity
North Ballroom	4,500 SqFt	400	200		350
South Ballroom	6,500 SqFt	600	400		600

169 E Flager St, Miami, FL 33131 | 305.777.1637 | [www.thedupontbuilding.com](http://www.thedupontbuilding.com)

**Contact:** Deborah Lindenfeld | [events@thedupontbuilding.com](mailto:events@thedupontbuilding.com)









## Bayfront Park / Maurice A. Ferré Park

Bayfront Park, a lush 32-acre, subtropical park is the host site for many special events and concerts. Bayfront Park fronts onto Biscayne Boulevard, and is three blocks from Interstate I-95. The park is easily accessible by Miami-Dade County public transportation, and is located next door to Bayside Marketplace. Maximum capacity of Bayfront Park, for gated events, ranges from 20,000-25,000 depending on the event infrastructure. The most popular sites for stage placement are on the Flagler Promenade and adjacent to the Biscayne Boulevard sidewalk.

The Tina Hills Pavilion is also located within the park and is available for smaller concerts, receptions, corporate events, and press conferences. The flexibility of the open-air design allows for play toward the seats or away from the seats, facing Biscayne Bay.

Maurice A. Ferré Park is a 20 acre park situated along Biscayne Bay just seven blocks north of Bayfront Park and is also home to the Pérez Art Museum Miami and soon to be Patricia & Phillip Frost Museum of Science.

### Specs:

	Area	Theater Capacity	Banquet Capacity	Classroom Capacity	Reception Capacity
Center of Park	1,075,000 SqFt				
Tina Hills Pavilion	86,000 SqFt				
Bayfront Park Amphitheater	215,000 SqFt	10,000			
Maurice A. Ferré Park	914,000 SqFt				

301 N Biscayne Blvd, Miami, FL 33132 | 305.358.7550 | bayfrontparkmiami.com

**Contact:** Jose Solano | jsolano@miamigov.com





## Dade Heritage Trust

As the most historic building in the Brickell area, Dade Heritage Trust is a lovely, charming and unique venue for corporate or private events. Constructed in 1905 as the first medical office in Miami, it served as the office and surgery of Dr. James Jackson, namesake of Jackson Memorial Hospital. Built in the Neo-Classical style, the beautifully restored building features two porches with columns, original octagonal tile and Dade-County pine flooring, wide windows and tall ceilings. It is listed on the National Register of Historic Places and locally designated as an historic landmark. The two former waiting rooms now serve as gallery spaces and surgery rooms host an exhibit and preservation library. The original kitchen may be utilized for events, as may the tree-canopied driveway at the rear of the building. The grounds are lushly landscaped with native plants, creating a green oasis in the middle of the Brickell Financial District. Gallery spaces open to an expansive porch on the east side of the building that also makes a wonderful small event space.

Dade Heritage Trust is within walking distance of the Brickell Avenue Metrorail Station, the Financial District Metromover Station and one block from the Brickell Avenue Trolley Stop

### Specs:

	Area	Theater Capacity	Banquet Capacity	Classroom Capacity	Reception Capacity
Gallery Spaces and porches	900 SqFt	40	60	40	80

190 SE 12 Terrace, Miami, FL 33131 | 305.358.9572 | [dadeheritagetrust.org](http://dadeheritagetrust.org)

**Contact:** Christine Rupp | [chris@dadeheritagetrust.org](mailto:chris@dadeheritagetrust.org)



---

Downtown Miami Venues





## HistoryMiami

HistoryMiami Museum, a Smithsonian Affiliate located in the heart of downtown Miami, safeguards and shares Miami stories to foster learning, inspire a sense of place, and cultivate an engaged community. Through exhibitions, artistic endeavors, city tours, education, research, collections and publications, HistoryMiami Museum works to help everyone understand the importance of the past in shaping Miami’s future.

The museum is currently housed in the Cultural Plaza, designed by renowned architect Philip Johnson. This location is the perfect venue for your next gathering. The museum offers several meeting and event spaces from a plaza that holds 3,000 guests to a theater for a business lunch or panel discussion to our South Building Lobby with a bright mural reflecting the colors and diversity of Miami. Centrally located, and with a parking garage on site, our venue makes the experience effortless for your guests. HistoryMiami and the Cultural Plaza are also just steps away from the Government Center Metrorail and Metromover. Special moments await you as your guests are transported in time to this oasis of culture and elegance.

### Specs:

	Area	Theater Capacity	Banquet Capacity	Classroom Capacity	Reception Capacity
Cultural Plaza	28,334 SqFt				2000
Sculpture Garden	3,240 SqFt				100
North Lobby	1,700 SqFt	75	80	50	250
Mural Gallery	1,140 SqFt	75	90		125
South Lobby	2,160 SqFt		120		200
Theater	1,780 SqFt	160	80	50	150

101 W Flagler St, Miami, FL 33130 | 305.375.1614 | [www.historymiami.org](http://www.historymiami.org)

**Contact:** Stephanie O’Barr | [sobarr@historymiami.org](mailto:sobarr@historymiami.org)







## Ice Palace Film Studios

Ice Palace Studios is a 1920s Ice Plant converted into a Film Studio and general Production Facility. With a maximum occupancy of 8,000 people, the studio is capable of producing events ranging from concerts to charity dinners to trade shows and conventions. Since the stages are all in black, they are ideal for creating environments uniquely designed for the event and play a strong role in accomplishing the branding roles of producers.

Ice Palace Studios is located directly West of South Beach, South of Wynwood, and North of Downtown Miami. It is easily accessible to 395, a short ride to Miami International Airport.

### Specs:

	Area	Theater Capacity	Banquet Capacity	Classroom Capacity	Reception Capacity
West Building	20,000 SqFt				
West Building back garden	20,000 SqFt				
East Building					
Lobby	5,000 SqFt				
Stage 1	17,500 SqFt				
Stage 2	15,000 SqFt				
Stage 3	3,400 SqFt				
Front Garden	25,000 Sqft				

59 NW 14th St. Miami, FL 33136 | 305.3477400 |  
[www.icepalacestudios.com](http://www.icepalacestudios.com) **Contact:** [Juan@icepalacestudios.com](mailto:Juan@icepalacestudios.com)



## James L. Knight International Center

The James L. Knight International Center is a world-class multipurpose entertainment, meeting, and convention complex located in the heart of Downtown Miami's business, commercial, and financial district. Owned by the City of Miami and managed by ASM Global, the center is comprised of the James L. Knight Center, the Miami Convention Center and the Hyatt Regency Miami Hotel. The James L. Knight Center theater seats up to 5,000 for entertainment, meeting and general sessions; the Miami Convention Center contains 28,000 square feet of dividable exhibit, meeting and banquet space, The River walk, Riverfront Promenade (Upper and Lower), and the Regency Corridor; the Hyatt Regency Miami Hotel features first class accommodations in 612 rooms and suites, award-winning restaurants, and an additional 34,000 square feet meeting space; the Miami Convention Center which offers a 444 seat auditorium, a 117 seat lecture hall and 20 variable meeting rooms.

400 SE 2 Av Miami, FL 33131 | 305.416.5974 & 305.416.5972 | [www.jlkc.com](http://www.jlkc.com)

**Contact:** Bob Murray | [rmurray@jlkc.com](mailto:rmurray@jlkc.com)  
Elizabeth Pardo | [epardo@jlkc.com](mailto:epardo@jlkc.com)



## Specs:

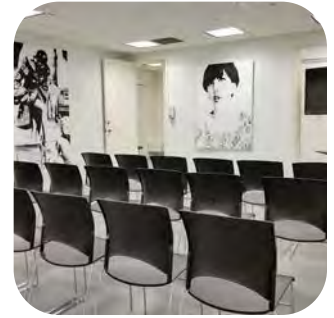
	Area	Theater Capacity	Banquet Capacity	Classroom Capacity	Reception Capacity
JLK Theater	16,000 SqFt	4,569	1,918	800	
JKL Lobby	13,000 SqFt				
JKL Outdoor	3,300 SqFt				
North Hall	11,000 SqFt	600	600	150	1,200
Central Hall	13,000 SqFt	1,000	800	170	1,500
South Hall	4,000 SqFt	450	300	75	700
Ashe Auditorium	5,917 SqFt	444		444	
Ashe Lobby	1,764 SqFt		70		150
Board Room	485 SqFt	40	50	28	50
Calusa	784 SqFt	90	50	28	50
Foster I & II	1008 SqFt	100	80	60	100
Gallery	1,780 SqFt	250	78		300
Gautier	700 SqFt	70	50	30	50
Granada Board Room	525 SqFt	40	30	15	60
Ibis	1,500 SqFt	68	90	63	120
Johnson	966 SqFt	100	60	60	100
Merrick	2,132 SqFt	200	100	110	160
Pearson	1,300 SqFt	100	100	60	120
Pre-Function Area	1,147 SqFt		60		125
President	483 SqFt	40	40	28	50
Stanford	483 SqFt	40	40	28	50
Tequesta	725 SqFt	50	50	30	100
Terrace	1,400 SqFt				150
Zamora	483 SqFt	40	50	28	50



---

Downtown Miami Venues





## mindwarehouse

mindwarehouse is a work, meeting & training space located in the downtown Miami Historic District. We offer flexible meeting space and private office rentals by the hour or day for 1 to 40 guests.\* Rooms come with WiFi and options for a mobile LCD TVs and a mobile dry erase board at no extra charge. Private offices are also available for month to month lease. No membership is required to use our space.

Not ready to lease an office but need a business address? Many of our clients sign up for our business mail services and use our meeting room space when and if they need it. We also highlight local visual artists so our walls are always changing with unique and amazing pieces throughout our spaces.

\*However, due to COVID-19 safety protocols, we are limiting 1-12 guests currently.

### Specs:

	Area	Theater Capacity	Banquet Capacity	Classroom Capacity	Reception Capacity
Meeting Room	220 SqFt	4	4	4	8
Presentation	270 SqFt.	25	8	8	25
Worshop Space	454 SqFt	454	40	36	
Training Space	600 SqFt	40	16	16	40

111 NE 1 St, 7<sup>th</sup> Floor, Miami, FL 33132 | 786-571-8660 | [www.mindwarehouse.com](http://www.mindwarehouse.com)

**Contact:** Eve Zygnerski | [eve@mindwarehouse.com](mailto:eve@mindwarehouse.com)



## The National Foundation for the Advancement of Artists (YoungArts)

The National Foundation for the Advancement of Artists (YoungArts) was established in 1981 by Lin and Ted Arison to identify the most accomplished young artists in the visual, literary and performing arts, and provide them with creative and professional development opportunities throughout their careers. Since acquiring the former Bacardi Tower and Museum buildings in Miami in 2012, YoungArts has converted the buildings into a lively, multidisciplinary cultural institution. Located on the corner of Biscayne Boulevard and NE 21st Street—at the nexus of the Wynwood Arts District, Arts & Entertainment District and Edgewater—the campus supports expanded programming in Miami and across the country. From the Tower building—featuring 28,000 mosaic tiles in a mural created by Brazilian artist Francisco Brennand—to the Jewel Box and its stained glass tapestries, the YoungArts Campus is unlike any other event venue in Miami. Please note capacity may be reduced pending future COVID restrictions.

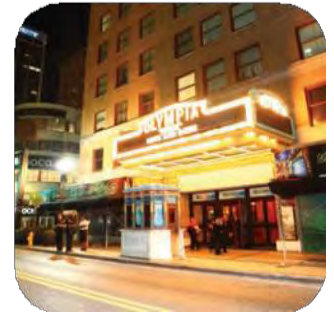
### Specs:

	Area	Theater Capacity	Banquet Capacity	Classroom Capacity	Reception Capacity
Ted's @ YoungArts	1,912 SqFt	70	80	80	80
The Jewel Box (Per Floor)	4,000 SqFt	200	300	200	340
The Plaza	40,425 SqFt		1,500+		3,000+
The Tent	Varies according to configuration				1000+
The Gallery 1 <sup>st</sup> Floor	1,325 SqFt				130
The Gallery 2 <sup>nd</sup> Floor	1,693 SqFt				130

2100 Biscayne Blvd, Miami, FL 33137 | 305-722-5327 | [www.youngarts.org](http://www.youngarts.org)

**Contact:** [rentals@youngarts.org](mailto:rentals@youngarts.org)





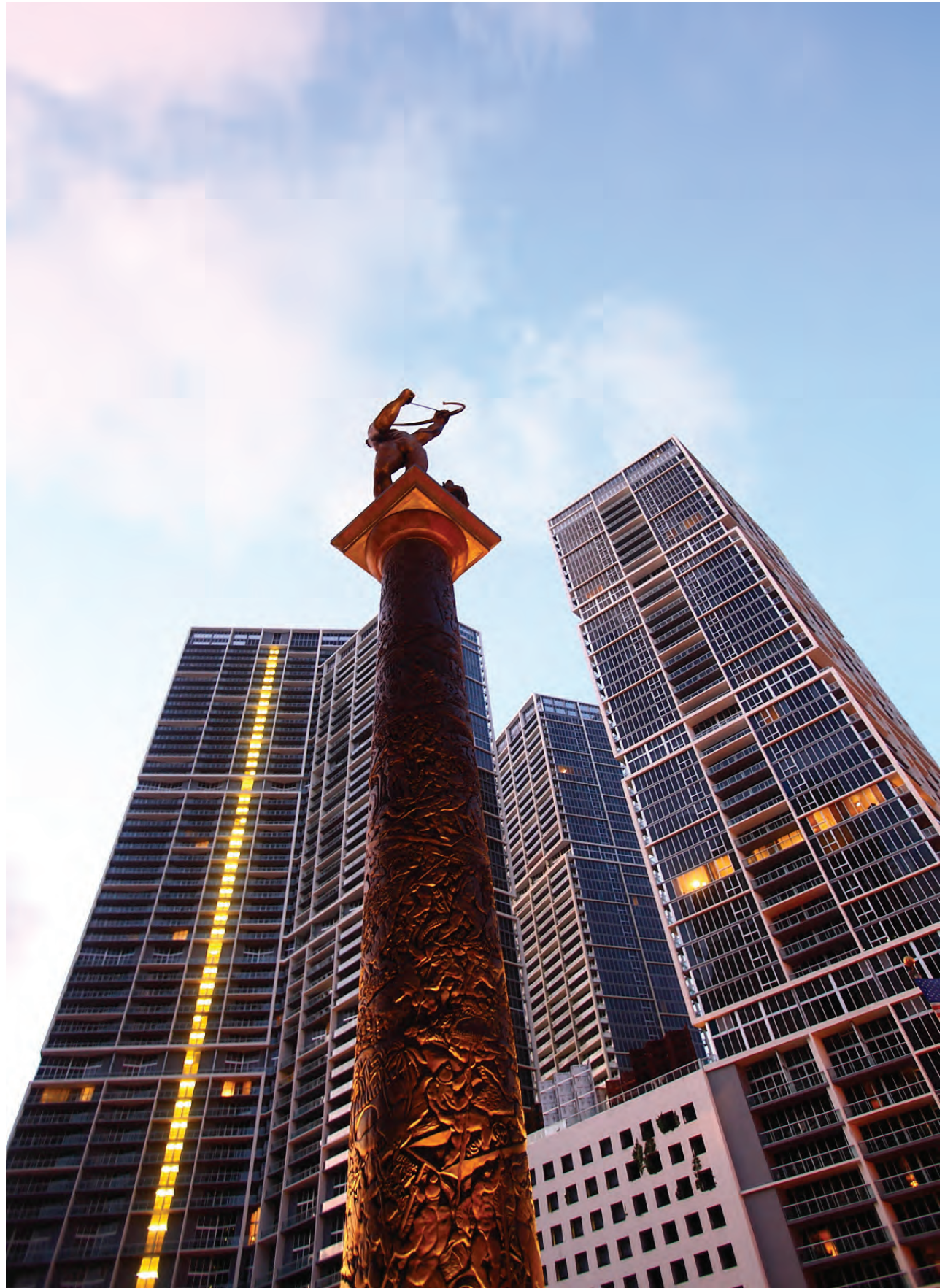
## Olympia Theater

Tucked into Miami’s contemporary skyline, the Olympia Theater is an enchanting Mediterranean courtyard with shimmering stars and golden balconies. Majestic turrets and towers suggest another era when performances were events, and grand theaters provided a dream-like escape from the modern world. The Olympia Theater is not just a “venue”— it is the jewel of South Florida arts and entertainment facilities, affording its diverse community and international guests a unique cultural experience that defies comparison.

### Specs:

	Area	Theater Capacity	Banquet Capacity	Classroom Capacity	Reception Capacity
Main Theater	18,000 SqFt	1,567			
1st Floor Lobby	1,535 SqFt		150		250
2nd Floor Lobby (no Elevators)	1,592 SqFt		150		250
Auditorium (stage only)	2,652 SqFt		250		350

174 E Flagler St, Miami, FL 33131 |







## Pérez Art Museum Miami (PAMM)

Pérez Art Museum Miami (PAMM), a nearly 40-year-old South Florida institution formerly known as Miami Art Museum (MAM), is located in Downtown Miami's Maurice A. Ferré Park. Designed by world-renowned architects Herzog & de Meuron, the state-of-the-art facility is a model for sustainable museum design and progressive programming. Located alongside beautiful Biscayne Bay, PAMM features 200,000 square feet of sprawling galleries, shaded outdoor verandas, a waterfront restaurant and bar, a museum shop, an education center with a library, media lab and classroom spaces, and more.

1103 Biscayne Blvd, Miami, FL 33130 | 786-345-5612 | [www.pamm.org](http://www.pamm.org)

**Contact:** Special Events Department | [entertain@pamm.org](mailto:entertain@pamm.org)

## Specs:

	Area	Theater Capacity	Banquet Capacity	Reception Capacity
Auditorium Small Configuration	2,628 SqFt	150		
Auditorium Large Configuration	2,628 SqFt	250		
Padma and Raj Vattikuti Learning Theatre	2,225 SqFt	112		
Terrace Platform	3,280 SqFt	350	250	350
East Portico	12,205 SqFt	1,000	500	1,200
Dorothy and Aaron Podhurst Lobby	2,508 SqFt	100	150	300
Paresky Hall	2,130 SqFt		100	150
Deborah and Larry Hoffman Board Room	988 SqFt	100	80	100
Northern Trust Terrace	2,466 SqFt	100	120	100
Bistro- Indoor	1,175 SqFt		72	
Bistro- Outdoor	884 SqFt		70	
West Portico	2,840 SqFt		250	300
Museum Buyout	200,000 SqFt			5,000





## Phillip and Patricia Frost Museum of Science

Celebrate in an underwater wonderland. Entertain under the stars. Impress with a laser spectacular.

Make your event the toast of the town at one the city's most talked about venues—the Phillip and Patricia Frost Museum of Science. With stunning architecture and sweeping views of Biscayne Bay, you and your guests will be treated to one of the most spectacular event spaces in South Florida. Frost Science, a LEED Gold-certified building, offers special experiences and awe-inspiring spaces for all types of events, including flexible science exhibition halls, a four-level aquarium, a 250-seat full-dome planetarium and a living rooftop. Host your next event at Frost Science and enjoy fine international cuisine from Constellation Culinary Group. Equipped with state-of-the-art audiovisual and production capabilities, the museum also offers dramatic indoor and outdoor event spaces that can accommodate everything from a small gathering to an elaborate production for 5,000 of your closest friends.

1101 Biscayne Blvd., Miami, FL 33132 | 305.434.9531 | [www.frostscience.org](http://www.frostscience.org)

**Contact:** [events@frostscience.org](mailto:events@frostscience.org)

Specs:

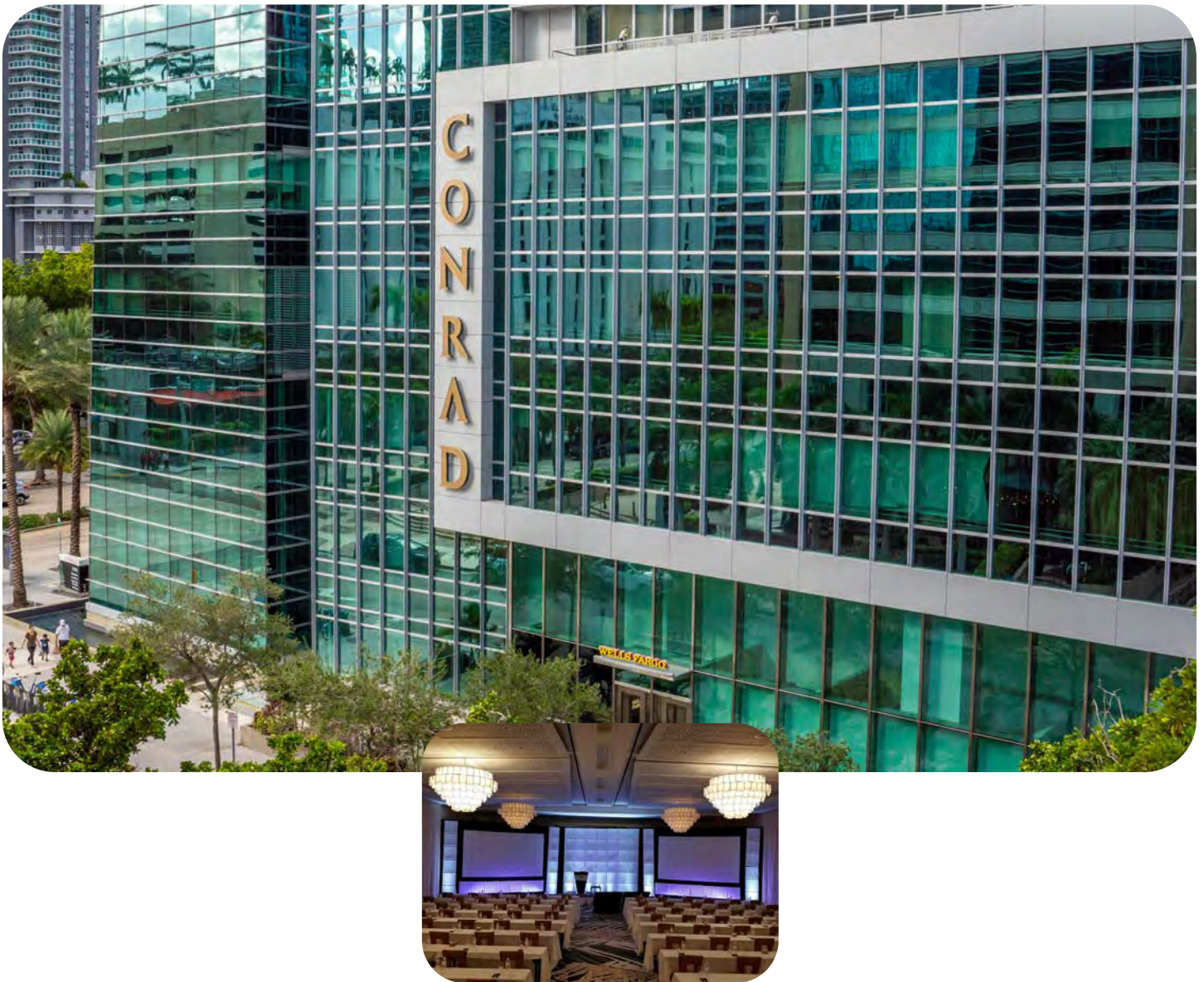
	Area	Theater Capacity	Banquet Capacity	Classroom Capacity	Reception Capacity
Frost Planetarium		250			
Ocean Gallery	8,200 SqFt	650	408		1,000
Aquarium- Deep	3,800 SqFt		160		300
Aquarium- Vista	8,200 SqFt		150		700
Trisha and Dan Bell Suite	1,082 SqFt	100	60	35	150
Lunar Terrace	2,280 SqFt		100		150
FPL Solar Terrace	975 SqFt		70		100
Entire Museum					5,000
Knight Learning Center	1,700 SqFt	200	100	90	160





DOWNTOWN MIAMI HOTELS





## Hotel AKA Brickell

Hotel AKA Brickell is a tranquil, sophisticated urban retreat that's redefining Miami stays. Whether you're visiting for just a couple days or longer, you'll enjoy a comfortable living environment elevated by premium services and amenities. Overlooking Biscayne Bay and the buzzing, walkable center of Brickell, the property offers sleek guest rooms and expansive suites, with thoughtful details that complement your lifestyle. You'll also enjoy Nativo Kitchen & Bar, a popular dining destination that combines chic art-deco style with sky-high views. Soaring above the skyline, the property is just steps away from business hubs, progressive art galleries, fashionable boutiques, and world-renowned dining. The iconic enclaves of South Beach, Coconut Grove, Coral Gables, and the Miami Design District are also easy to explore from here.

1395 Brickell Ave, Miami, FL 33131 | 305.503.6500 | [www.ConradMiami.com](http://www.ConradMiami.com)

Contact: [conrad-miami@conradhotels.com](mailto:conrad-miami@conradhotels.com)



## Specs:

	Area	Theater	Banquet	Classroom	Reception
Level 3					
Conrad Ballroom	3,869 SqFt	380	300	213	400
Pre-Function	1,520 SqFt		60		140
Lisbon	3,141 SqFt		220		160
Lisbon A	1,419 SqFt	110	100	72	120
Lisbon B	1,722 SqFt	120	120	90	140
Pre-Function	1,584 SqFt				60
Porto	900 SqFt	60	60	48	80
Estoril	900 SqFt	60	60	48	80
Lagos Boardroom	540 SqFt				
Faro	540 SqFt	24	30	15	35
Algarve	324 SqFt	18	20	18	24
Madeira	324 SqFt	18	20	18	24
Level 2					
Vila Real	1,892 SqFt	210	140	108	
Santa Cruz	1,276 SqFt	142	110	84	
Pre-function	1,343 SqFt				40
The Rooftop					
Lower Level	1,520 SqFt		60		100
Upper Level	6,956 SqFt		60		200



## Courtyard By Marriott Miami Downtown / Brickell Area

Welcome to Courtyard Miami Downtown/Brickell Area hotel! Here, guests are welcomed to a prime location in the heart of Miami near both the Brickell Financial District & the endless excitement of downtown Miami. We are just a short walk from the Miami Convention Center for guests attending events. Whether you're traveling for business or pleasure, our hotel near downtown Miami is nearby everything you need. Shop at Bayside Marketplace, watch a game at American Airlines Arena, take a jaunt down to South Beach Miami & then return to a great night sleep in perfectly plush bedding. Our spacious guest rooms also feature thoughtful amenities including LCD TVs with premium channels, free Wi-Fi & more! Wake up to hearty breakfasts or gather with friends in the evening over seasonally-inspired cocktails & succulent deserts onsite at The Bistro. Cool off after a long day of work or play with a dip in our refreshing pool. No matter what brings you to Miami, you'll want to book a great stay at our hotel in Brickell Miami.

### Specs:

	Area	Theater	Banquet	Classroom	Reception
Orchid	238 SqFt				
Royal Ballroom	1,920 SqFt	175	120	90	175
Royal 1	899 SqFt	70	40	25	70
Royal 2	1,038 SqFt	80	50	35	80
Jasmine	441 SqFt	50	28	20	50
Hibiscus	650 SqFt	60	50	20	60

200 SE 2 Ave, Miami, FL 33131 | 305.374.3000 | [www.marriott.com/MIADT](http://www.marriott.com/MIADT)

Contact: Karla Thornton | [karla.thornton@dimdev.com](mailto:karla.thornton@dimdev.com)





## Doubletree By Hilton Grand Hotel Biscayne Bay Miami

The Doubletree by Hilton Grand Hotel Biscayne Bay Miami is a luxurious waterfront hotel with fully equipped condominiums offering breathtaking views of Biscayne Bay and a full range of amenities. It is perfectly located on Biscayne Bay next to Sea Isle Marina — home to the Miami International Boat Show.

Events are executed with ease at DoubleTree by Hilton Grand Hotel Biscayne Bay, situated in the heart of downtown. Rely on our expertise to provide unique service for any occasion, ensuring your guests have a memorable experience. Hold meetings, training sessions, private parties or weddings in any of our ballrooms with stunning views and exceptional service. The Grand Ballroom features scenic views of Biscayne Bay and an outdoor terrace that faces the expansive marina and offers fresh breezes.

### Specs:

	SqFt	Theater	Banquet	Classroom	Reception
Grand Room A & B	3,780 SqFt	200	220	120	300
Grand Room Terrace	2,000 SqFt	175			230
Key Biscayne	975 SqFt	90	60	30	70
Key Largo	725 SqFt	60	40	30	50
Key West	1,050 SqFt	90	60	25	70
Key West & Key Biscayne	2,025 SqFt	100	120	50	130
Briza on the Bay	5,220 SqFt		300		500

1717 N Bayshore Dr, Miami, FL 33132 | 305.372.0313 | [www.BiscayneBay.Doubletree.com](http://www.BiscayneBay.Doubletree.com)

Contact: Fox Youngblood | [fox.youngblood@hilton.com](mailto:fox.youngblood@hilton.com)



## EAST, Miami

Nestled in the heart of Brickell City Centre, EAST, Miami is Swire Hotels' first North American venture following the openings of EAST in Hong Kong and Beijing. EAST, Miami offers 352 guest rooms to include 97 suites and 20,000 square feet of versatile function rooms and outdoor venues suitable for any type of event. All of our spaces feature floor-to-ceiling windows, complimentary WiFi access and the latest audio-visual equipment and technical support.

Brickell City Centre is mixed-use development spanning more than 11 acres, Brickell City Centre is where brands and lifestyle meet. The 500,000 square-foot shopping center contains over 100 luxury brands and independent boutiques, a fine dining movie theater, as well as a variety of other culinary and entertainment options.

788 Brickell Plaza, Miami, FL 33131 | 305.712.7000 | [www.east-miami.com](http://www.east-miami.com)

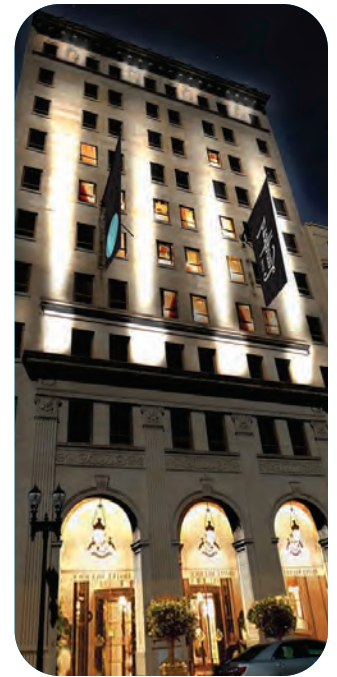
Contact: Kayla Rodriguez, Senior Catering Manager | [kaylarodriguez@swirehotels.com](mailto:kaylarodriguez@swirehotels.com)



## Specs:

	Area	Theater	Banquet	Classroom	Reception
The Crush	3,300 SqFt	230	230	90	290
Rise	1,600 SqFt	132	130	63	150
Set	1,600 SqFt	132	130	63	150
High Noon	840 SqFt				
Workshop 1&2	1,525 SqFt	165	100	60	130
Workshop 1	875 SqFt	90	50	27	70
Workshop 2	650 SqFt	60	40	24	60
Workshop 3	630 SqFt	70	40	30	50
Workshop 4	655 SqFt	75	50	30	60
The Shrubbery			50		80
Pool Deck			150		290
Quinto Private Room			42		80
Sugar			60		

Available for group rates and reservations starting May 1<sup>st</sup>.



## Eurostars Langford Hotel

The vibrant and social spirit that made Downtown Miami an area of art, culture, and inspiration is revived in all the details that make the Eurostars Langford a new benchmark for the city scene. Housed in a historic building from 1925, this jewel of Beaux Arts architecture has been completely reinvented to offer an essential accommodation for a new generation of travelers in search of sophistication.

The hotel features 126 rooms of luxurious space, where the comfort of modern facilities merges with an inspiring design. The soft and warm lights, the oak floors with 1920's spike design and the vintage touch of the walls' motifs are complemented by state-of-the-art amenities that are integrated with the rest of the elements as part of the decoration. The wide range of services offered by the Eurostars

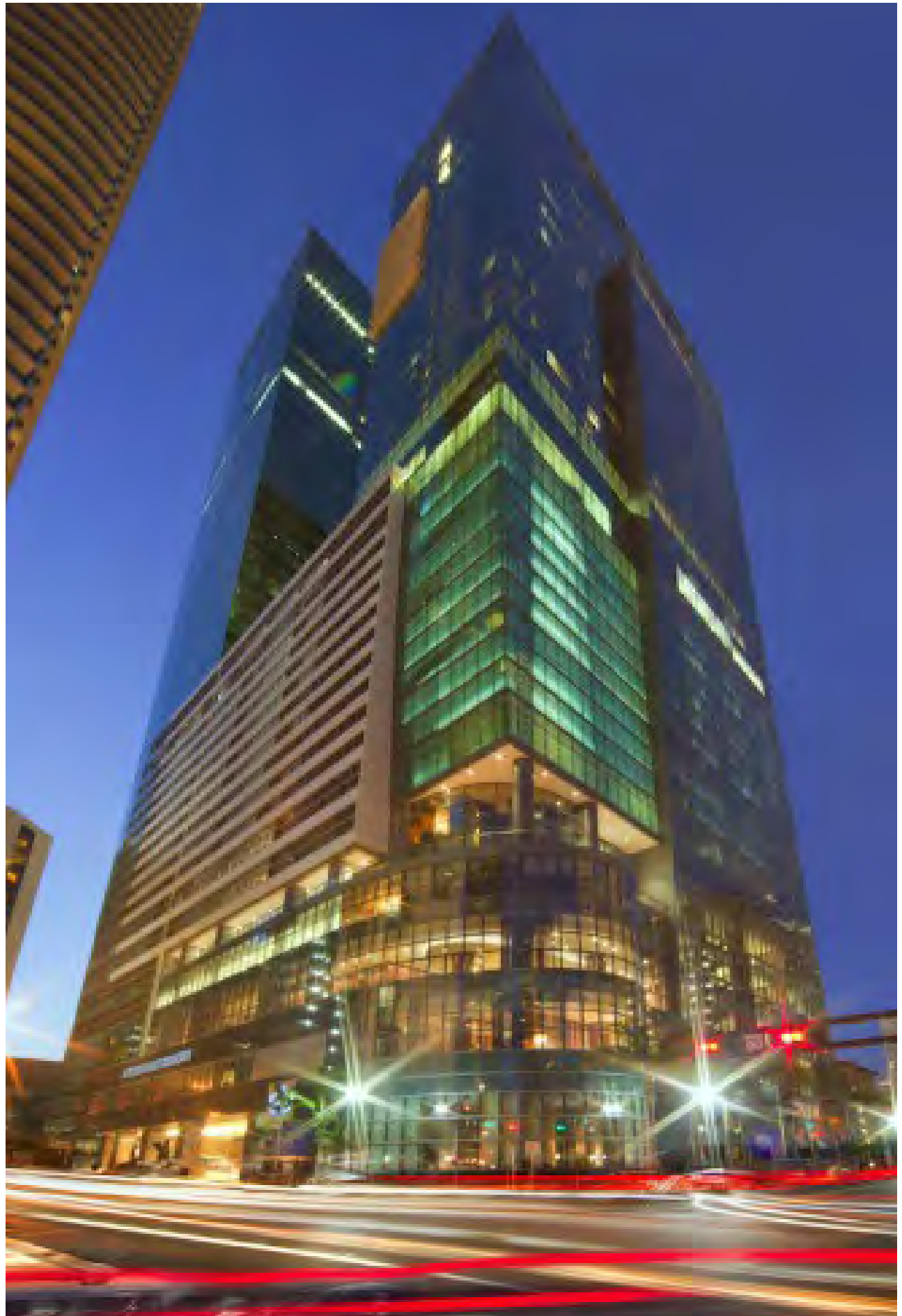
### Specs:

	Area	Theater	Banquet	Classroom	Reception
Main Meeting Room	1138 SqFt	112	85	42	100

121 SE 1 St, Miami, FL 33131 | 305.420.2200 | [www.langfordhotelmiami.com](http://www.langfordhotelmiami.com)

Contact: Debra Klemm, Director of Sales & Marketing | [DKlemm@langfordhotelmiami.com](mailto:DKlemm@langfordhotelmiami.com)







## Four Seasons Hotel Miami

Set the tone for a successful event in Miami, with flexible event space and attentive service in Brickell’s leading urban resort. The Hotel’s redesigned function spaces configure readily for your group, for programs of all sizes and needs. Consider the Grand Ballroom for galas of up to 450 guests, the sophisticated Bal Harbour Room for intimate events, or under the tropical Royal Palm canopy in the shallow waters of the Palm Grove Pool. Four Seasons Hotel Miami is the ideal starting point for groups to explore the city’s beaches and lively art scene, perfectly balancing business and pleasure.

1435 Brickell Ave, Miami, FL 33131 | 305.381-3093 | [www.FourSeasons.com/Miami](http://www.FourSeasons.com/Miami)

Contact: Robin Garner | [sales.mia@fourseasons.com](mailto:sales.mia@fourseasons.com)



## Specs:

	Area	Theater	Banquet	Classroom	Reception
Grand Ballroom	5,830 SqFt	528	456	216	525
Ballroom West	2,915 SqFt	264	170	108	250
Ballroom East	2,915 SqFt	264	170	108	250
Ballroom Pre-Function Room	1,580 SqFt		50		150
Miami	2,500 SqFt	216	180	120	230
Miami Pre-function Room	800 SqFt		50		75
Coral Gables	1,100 SqFt	100	80	60	100
Sky Bridge	903 SqFt		60		100
Coconut Grove	900 SqFt	72	60	63	82
Key Biscayne	800 SqFt	62	50	32	75
Bal Harbous	700 SqFt	80	60	30	65
Brickell Key	525 SqFt	38	16	18	35
Bahia	2,630 SqFt		120		200
14Thirty-Five	1,705 SqFt	56	80	24	120
Palm Grove	300 SqFt		300		450



## Hampton Inn & Suites Miami Brickell/Downtown

Stylish, modern, and vibrant, the Hampton Inn & Suites by Hilton Miami Brickell Downtown offers the finest setting for all types of meetings and events in Miami, Florida. The meeting facilities are fully equipped to host any event featuring professional Meeting Rooms, and Executive Boardrooms, complete with banquet and meeting amenities, audio visual equipment and event planning services, the perfect space for your event, including conferences, business meetings, conventions, as well as social gatherings, such as cocktail receptions, dinners, and banquets.

### Specs:

	Area	Theater	Banquet	Classroom	Reception
Bluebird	485 SqFt				
Heron	325 SqFt				
Ibis I	1,100 SqFt	120	64	51	150
Ibis II	1,100 SqFt	120	64	51	150
Ibis I & Ibis II	2,300 SqFt	240	120	135	300
Egret	540 SqFt	45	24	36	40
Pre-Function	665 SqFt				60
Covered Terrace	1,250 SqFt				120
Bar	1,740 SqFt				100

50 SW 12 St, Miami, FL 33130 | 305.377.9400 | [www.HamptonInnMiamiBrickell.com](http://www.HamptonInnMiamiBrickell.com)  
 Contact: Lourdes Beach | [lbeach@hospitalityamerica.com](mailto:lbeach@hospitalityamerica.com)







## Hilton Miami Downtown

Whether you are traveling for a social event, business meeting, or local convention, the Hilton Miami Downtown hotel is a perfect venue for all types of events. Our Miami conference center space is centrally located minutes from the airport and dozens of prestigious area businesses. Choose from over 45,000 sq. ft. of flexible Downtown Miami meeting space including a 17,000 sq. ft. ballroom, the largest in Downtown Miami. Host small executive sessions for 10, receptions for 30 or large corporate events for up to 2,000 people.

### Specs:

	Area	Theater	Banquet	Classroom	Reception
Alto	880 SqFt	60	60	40	30
Boardroom 224	540 SqFt		20		30
Boardroom 324	540 SqFt		20		30
Boardroom 424	540 SqFt				
Boardroom 524	540 SqFt				
Boardroom 624	540 SqFt				
Concerto	8,803 SqFt	800	550	440	900

1601 Biscayne Blvd, Miami, FL 33132 | 305.374.0000 | [www.HiltonMiamiDowntown.com](http://www.HiltonMiamiDowntown.com)

Contact: Camila Medina | [miadt\\_sales@hilton.com](mailto:miadt_sales@hilton.com)



	SqFt	Theater	Banquet	Classroom	Reception
Concerto A	2,754 SqFt	200	160	120	275
Concerto B	2,448 SqFt	150	140	110	250
Concerto C	1,978 SqFt	140	140	110	200
Concerto D	2,000 SqFt	140	110	100	200
Degas	625 SqFt	40	50	25	75
Metronome	882 SqFt				
Overture I Foyer	7,144 SqFt		400		1200
Overture II Foyer	1,800 SqFt				
Picasso	1,204 SqFt	80	70	60	125
Soprano	975 SqFt	80	50	40	90
Symphony	16,684 SqFt	2000	1200	1080	2000
Symphony I	4,365 SqFt	475	300	300	450
Symphony I/II	8,342 SqFt	915	580	570	860
Symphony II	3,977 SqFt	440	260	240	410
Symphony III	3,880 SqFt	440	260	240	400
Symphony III/IV	8,342 SqFt	915	580	570	860
Symphony IV	4,462 SqFt	475	320	300	460
Tenor	1,711 SqFt	120	110	80	175



## Holiday Inn Port of Miami — Downtown

The Holiday Inn Port of Miami – Downtown is conveniently located in the heart of Downtown Miami overlooking beautiful Biscayne Bay, directly across the street from Bayside Marketplace and opposite PortMiami. A Metromover stop is located behind the parking lot. Whether visiting the “Magic City” for business or pleasure, this is the perfect place for all guests. The entire staff takes pride in providing a friendly and pleasant environment.

### Specs:

	Area	Theater	Banquet	Classroom	Reception
Boardroom	350 SqFt				

340 Biscayne Blvd, Miami, FL 33132 | 305.371.4400 | [www.ihg.com](http://www.ihg.com)  
 Contact: Malik Johnson | [malik.johnson@aimbridge.com](mailto:malik.johnson@aimbridge.com)









## Hyatt Regency Miami

Hyatt Regency Miami is a dynamic meeting and event destination with innovative spaces to get inspired and celebrate. Located in the city center, steps from one of the trendiest neighborhoods in Miami, known as Brickell, our iconic white towers overlook the Miami River, and is connected to the James L. Knight Center. The hotels features 100,000 square feet of event space, including a variety of breakout rooms, the elegant Regency Ballroom, the 28,000 square feet Riverfront Hall and the Riverwalk Outdoor Terrace with a dock that may accommodate two large yachts. Our ideal location puts you steps from the Miami Riverwalk and close to the Port of Miami. Shop the Brickell City Centre or Bayside Market Place, explore Little Havana, or tour the Frost Museum of Science.

Stay with us to explore the heart of our city or host your next business meetings, conferences, trade shows, social events and weddings in our magnificent spaces; featuring creative food & beverage menus, state of the art audiovisual equipment and exceptional customer service!

### Specs:

	Area	Theater	Banquet	Classroom	Reception
Regency Ballroom	11,840 SqFt	1,500	1,000	800	2,000
Tuttle	3,520 SqFt	300	240	200	400
Tuttle North or South	1,188 SqFt	80	60	50	140
Tuttle Center	1,144 SqFt	70	50	40	100
Monroe	2,400 SqFt	225	180	125	300

400 SE 2 Ave, Miami, FL 33131 | 305.358.234 | [www.MiamiRegency.Hyatt.com](http://www.MiamiRegency.Hyatt.com)

Contact: Colleen Diaz | [colleen.diaz@hyatt.com](mailto:colleen.diaz@hyatt.com)



	SqFt	Theater	Banquet	Classroom	Reception
Flagler	2,400 SqFt	225	180	125	300
Brickell	3,520 SqFt	300	240	200	400
Brickell North or South	1,188 SqFt	80	60	50	140
Brickell Center	1,144 SqFt	70	50	40	100
Pre-function Area					
Orchid	3,134 SqFt	260	190	160	350
Orchid A	602 SqFt	40	40	21	50
Orchid B	679 SqFt	60	40	24	75
Orchid C	1,179 SqFt	100	70	40	120
Orchid D	674 SqFt	60	40	24	75
Azalea	621 SqFt	40	40	20	50
Azalea A	299 SqFt	20	20	9	25
Azalea B	322 SqFt	20	20	9	25
Gardenia	976 SqFt	80	60	40	100
Gardenia A	304 SqFt	30	20	12	30
Gardenia B	320 SqFt	30	20	12	30
Gardenia C	352 SqFt	35	30	14	40
Hibiscus	2,754 SqFt	200	160	100	250
Hibiscus A	1,275 SqFt	120	70	60	100
Hibiscus B	1,479 SqFt	120	80	70	125
Jasmine	4,185 SqFt	400	350	250	400
Riverfront Hall	28,000 SqFt	3,110	2,100	2,001	4,667
North Hall	11,000 SqFt	1,222	733	786	1,833
Central Hall	13,000 SqFt	1,444	1,017	929	2,167
South Hall	4,000 SqFt	444	350	286	667



## InterContinental Miami

Just minutes from the heart of the city's business district and lively local attractions, the InterContinental® Miami provides spacious and elegant conference facilities for your next Miami convention or social occasion. Book your event at Miami's premier convention hotel and take advantage of convenient features including more than 100,000 sq ft of event space, 35 flexible meeting rooms, exclusive event packages and more.

### Specs:

	Area	Theater	Banquet	Classroom	Reception
Brickell	4,437 SqFt	432	310	168	350
Merrick	4,400 SqFt	245	280	93	310
Trade	2,001 SqFt	230	140	86	200
Flagler	961 SqFt	96	60	42	80
Junior Ballroom	2,458 SqFt	140	160	55	200
Gusman	774 SqFt	83	50	32	60
Tuttle	893 SqFt	96	60	36	60

100 Chopin Plaza, Miami, FL 33131 | 305.372.4429 | [www.ICMiamiHotel.com](http://www.ICMiamiHotel.com)

Contact: Mike Kovensky | [mike.kovensky@ihg.com](mailto:mike.kovensky@ihg.com)



	Area	Theater	Banquet	Classroom	Reception
Dupont	803 SqFt	83	50	32	60
Dgusman/Tuttle	1,662 SqFt	100	110	39	110
Dupont/Tuttle	1,690 SqFt	100	110	39	110
Marti	398 SqFt	34	20	12	20
Fisher	263 SqFt				
Deering	247 SqFt	18	10		
Boardroom	450 SqFt				
Crandon	517 SqFt	55	20	21	20
Godfrey	502 SqFt	55	20	21	20
Bayfront Ballroom	7,219 SqFt	520	180	198	550
Bayfront A	4,524 SqFt	360	300	126	350
Bayfront B	2,696 SqFt	224	180	87	200
Sevilla	3,776 SqFt	293	250	115	300
Isles	1,963 SqFt	122	120	54	180
Hibiscus Isle	939 SqFt	70	50	36	70
Star Isle	579 SqFt	48	30	18	30
Palm Isle	445 SqFt	30	20	12	30
Star/Palm	1,024 SqFt	90	50	36	60
Grand Ballroom	13,314 SqFt	1,728	1020	735	2,000
Versailles	8,106 SqFt	900	600	386	1,200
Trianon	5,554 SqFt	646	420	294	800
Foyer	6,013 SqFt		320		500
Mezzanine	12,565 SqFt		860		2,000
East	5,132 SqFt		380		1,000
West	5,132 SqFt		380		1,000
South	2,300 SqFt				

## InterContinental Miami (cont.)

	Area	Theater	Banquet	Classroom	Reception
Chopin Ballroom	5,293 SqFt	477	350	177	500
Biscayne Ballroom	5,770 SqFt	422	410	192	550
Sandringham/Windsor	1,784 SqFt	205	120	72	120
Sandringham	877 SqFt	90	60	33	60
Windsor	907 SqFt	90	60	33	60
Balmoral	890 SqFt	90	60	33	60
Escorial/Alhambra	1,239 SqFt	142	80	48	100
Alhambra	618 SqFt	66	40	21	40
Escorial	621 SqFt	66	40	21	40
Raphael/Michelangelo	1,226 SqFt	142	80	48	100
Raphael	612 SqFt	66	40	21	40
Michelangelo	614 SqFt	66	40	21	40
Oxford	519 SqFt	44	30	14	30
Cambridge	518 SqFt	44	30	14	30
Trinity	520 SqFt	44	30	14	30
Registration Room	304 SqFt				
Pool Terrace	14,259 SqFt		620		800
Upper	8,479 SqFt		370		500
Lower	5,780 SqFt		250		300







## JW Marriott Miami

This hotel features 14 meeting rooms which total 24,000 sq ft of flexible conference and meeting facilities including a Grand ballroom that divides into 7 salons, innovating catering and inspiring menus by our award-winning Executive Chef & professional staff, event planning, audiovisual & video conferencing services, and high-speed Internet access.

### Specs:

	Area	Theater	Banquet	Classroom	Reception
Grand Ballroom	10,005 SqFt	1,000	600	680	784
Salon A	1,016 SqFt	80	66	45	84
Salon B	917 SqFt	80	66	40	84
Salon C	1,047 SqFt	80	66	45	84
Salon D	3,480 SqFt	350	198	180	350
Salon E	1,047 SqFt	80	66	45	84
Salon F	917 SqFt	70	66	35	72

1109 Brickell Ave, Miami, FL 33131 | 305.329.3505 | [www.marriott.com/miajw](http://www.marriott.com/miajw)

Contact: Macarena Sepulveda | [macarena.sepulveda@mdmusa.com](mailto:macarena.sepulveda@mdmusa.com)



	Area	Theater	Banquet	Classroom	Reception
Salon G	1,016 SqFt	80	66	45	84
Buenos Aires	583 SqFt	50	40	31	50
Hong Kong	621 SqFt	50	40	31	50
Madrid	444 SqFt	40	30	24	40
New York	495 SqFt	40	30	24	40
London I	529 SqFt	45	20	24	55
London II	621 SqFt	45	30	24	55
Isabela's	2,100 SqFt		120		150
Foyer			108		300
Zurich	324 SqFt	20	20	12	
Video Conference Room	200 SqFt				
Pool	4,500 SqFt		200		200
Private Isabela's	720 SqFt		40		50



## JW Marriott Marquis Miami

JW Marriott Marquis Miami infuses sophistication, design, art, fashion and technology into a diverse landscape of business, meeting and pleasure travel pursuits. Located in the heart of downtown Miami, close to the city’s exciting Wynwood Art District, the new Frost Science Museum, the Perez Art Museum and the world-renowned Miami Design District, JW Marriott Marquis Miami has become the arts and culture hotel in the middle of it all. Right at the gateway of the Brickell Financial District and a short drive from South Beach the hotel is perfectly placed in Miami’s epicenter. The hotel’s blend of sleek and modern design boasts 313 stunning guest rooms with state-of-the-art technology. Famed chef Daniel Boulud’s Mediterranean style restaurant Boulud Sud is a delicious destination for breakfast, lunch or dinner. Relax and unwind by our stainless steel sky pool and indulge yourself at Enliven Spa.

### Specs:

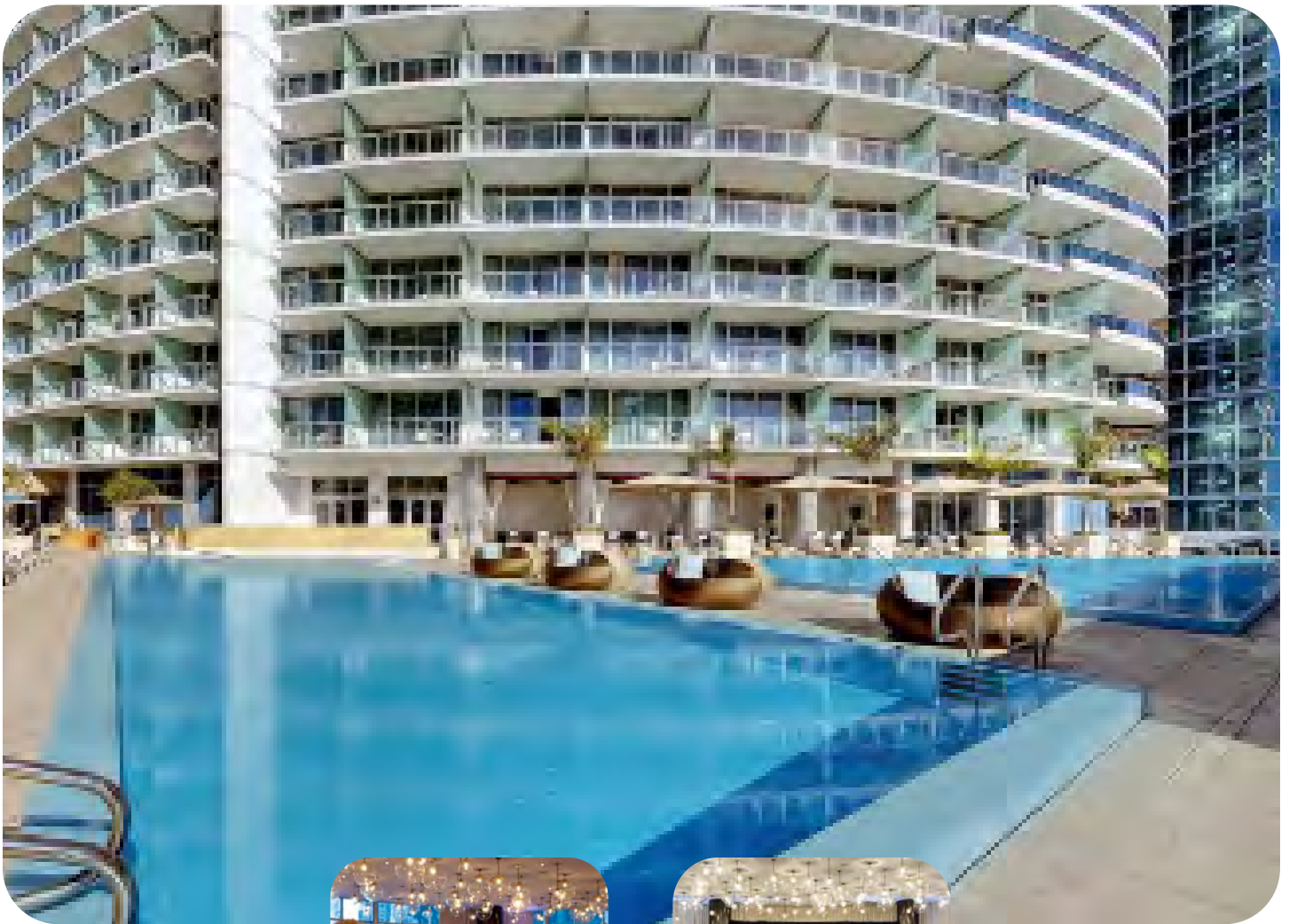
	SqFt	Theater	Banquet	Classroom	Reception
Metropolitan Ballroom	18,426 SqFt	1848	1350	1,236	2,350
Met 1	8,392 SqFt	838	630	660	1,048
Met 2	1,596 SqFt	159	120	96	199
Met 3	1,578 SqFt	157	120	96	196
Met 4	1,532 SqFt	152	120	96	191
Met 5	1,596 SqFt	159	120	96	199
Met 6	1,578 SqFt	157	120	96	196
Met 7	1,532 SqFt	152	120	96	191

255 Biscayne Blvd Way, Miami, FL 33131 | 305.421.8600 | [www.JWMarriottMarquisMiami.com](http://www.JWMarriottMarquisMiami.com)

Contact: Alberto Najjar | [alberto.najar@mdmusa.com](mailto:alberto.najar@mdmusa.com)



	Area	Theater	Banquet	Classroom	Reception
Metropolitan Ballroom Atrium	2,856 SqFt		120		356
Metropolitan Ballroom Pre-Function	10,500 SqFt				1,313
Fourth Floor Atrium	2,774 SqFt				347
Meeting Planner Office	99 SqFt				
Video Conference Room	267 SqFt				
Gallery 1	1,521 SqFt	152	45	45	190
Gallery 2	1,038 SqFt	104	72	72	129
Gallery 3	740 SqFt	70	42	42	88
Fifth Floor Atrium	2,856 SqFt				356
Junior Ballroom	3,441 SqFt	344	216	216	430
Junior Ballroom A	1,235 SqFt	123	72	72	154
Junior Ballroom B	1,135 SqFt	113	75	75	141
Junior Ballroom C	1,080 SqFt	108	72	72	135
Junior Ballroom Pre-Function	1,068 SqFt				134
Junior Ballroom Terrace	1,776 SqFt				223
Plaza 1	1,522 SqFt				
Plaza 2	696 SqFt	70	36	36	87
Plaza 3	692 SqFt	69	30	30	86
Plaza 4	1,171 SqFt	117	84	84	146
Plaza 5	1,171 SqFt	117	84	84	146
Plaza 6	768 SqFt	77	48	48	96
19th Floor Pre-Function	567 SqFt				80
Indoor Convertible Basketball Court	7,934 SqFt				990
Outdoor Pool Area	7,110 SqFt				375



## Kimpton Epic Hotel

Our waterfront downtown location provides sweeping views at every level. For starters, we have 15,000+ square feet of flexible and newly renovated meeting + event space with floor-to-ceiling windows. Our 16th-floor pool terrace (with two infinity pools) offers 13,000 square feet of gracious gathering space and panoramic views. Stunning guest rooms, suites all with private balcony perfects your Miami experience from sunrise to sunset. Then there's the unbridled commitment to innovative and delicious Cuisine served and presented by our chefs and service teams. Whether your group is seeking large spaces, a team building experience or to host a special event you can rest assured it will be EPIC and inspiring.

270 Biscayne Blvd Way, Miami, FL 33131 | 305.967.7337 | [www.EpicHotel.com](http://www.EpicHotel.com)

Contact: Eric Jellson | [sales@epic hotel.com](mailto:sales@epic hotel.com)



## Specs:

	Area	Theater	Banquet	Classroom	Reception
Ballroom Prime	2,859 SqFt	210	200	150	200
Banner	1,236 SqFt	60	80	55	80
Banner 2	495 SqFt	40	30	20	40
Baxter	617 SqFt	40	30	25	48
Foyer	1,734 SqFt		96		120
Gotham	1,800 SqFt	167	100	107	140
Gotham A	996 SqFt	90	60	57	74
Gotham B	884 SqFt	70	60	50	66
Grayson	816 SqFt	75	50	40	60
Krypton	807 SqFt	75	50	40	60
Metropolis A	2,017 SqFt	170	100	100	160
Metropolis B	2,170 SqFt	190	120	120	160
Metropolis Ballroom	4,187 SqFt	372	300	200	400
Parker	1,154 SqFt	102	84	40	96
Pool Deck	13,752 SqFt				520
Sanctum	1,562 SqFt	140	90	84	128
Sanctum A	803 SqFt	70	40	42	64
Sanctum B	759 SqFt	70	40	42	64
Wayne Boardroom	380 SqFt		10		
Xavier Boardroom	380 SqFt		10		



# Mandarin Oriental, Miami

This waterfront urban resort is located on prestigious Brickell Key, featuring spacious guest rooms and suites, state-of-the-art conference and banquet facilities, a five-star holistic spa and fitness center, and a world-class on-site Brickell Beach and Club. Mandarin Oriental, Miami offers a taste of Asian serenity in exhilarating Miami.

Our venue space is, without doubt, some of the best in Miami. Our versatile locations include a stunning ballroom with 18-foot ceilings, a private beach, a private dining area, the wine room and a choice of splendidly appointed function rooms.

## Specs:

	Area	Theater	Banquet	Classroom	Reception
Ballroom Level					
Mandarin Oriental Ballroom	7,920 SqFt	880	650	540	835
Ballroom Salons 1, 2, or 3	2,640 SqFt	290	210	165	275
Ballroom Terrace	2,100 SqFt		130		180
Singapore Room	576 SqFt	50	40	36	50
Singapore A or B	288 SqFt	25	20	18	25
Hong Kong Room	1,368 SqFt	120	100	90	145

500 Brickell Key Dr, Miami, FL 33131 | 305.913.8390 | [www.MandarinOriental.com](http://www.MandarinOriental.com)

Contact: Jill Demone | [jdemone@mohg.com](mailto:jdemone@mohg.com)

	Area	Theater	Banquet	Classroom	Reception
Hong Kong A	768 SqFt	80	60	45	80
Hong Kong B	600 SqFt	65	40	36	65
Pre Foyer	625 SqFt		60		80
Ballroom Foyer			120		300
Mezzanine Level					
Kahala Room	579 SqFt	50	40	36	50
Kalala A or B	288 SqFt	25	20	18	25
Himalayan Room	576 SqFt	50	10	36	50
Himalayan A or B	288 SqFt	25	20	18	25
Bangkok Room	1,392 SqFt	120	100	90	145
Bangkok A	768 SqFt	80	60	45	80
Bangkok B	SqFt 624	65	40	36	65
Boardroom	500 SqFt		Set T 14		
Presentation Room	290 SqFt		Set T 12		
Brickell Key Room	810 SqFt	54	50	45	50
Pool Deck			170		300
The Wine Room Lobby Level			130		170









## Miami Marriott Biscayne Bay

Discover one of Downtown Miami's most luxurious and conveniently located hotels – Miami Marriott Biscayne Bay. A recent redesign and \$31 million in extensive renovations have created an experience with a distinctive Miami contemporary vibe.

Miami meetings with a modern feel are on the agenda at the Miami Marriott Biscayne Bay, the only marina-front Miami hotel providing easy access to Downtown Miami and the calming ambience of breathtaking bay views. Big events and small, this hotel rises to every occasion.

### Specs:

	Area	Theater	Banquet	Classroom	Reception
Grand Ballroom	9,237 SqFt	1,000	800	550	1,300
Salon A	490 SqFt	40	30	24	40
Salon B	424 SqFt	28	30	15	30
Salon C	424 SqFt	28	30	15	30
Salon D	490 SqFt	40	30	24	40
Salon E	2,796 SqFt	262	210	140	400
Salon F	2,796 SqFt	262	210	140	400

1633 N. Bayshore Dr, Miami, FL 33132 | 305.374.3900 | [www.MarriottBiscayneBay.com](http://www.MarriottBiscayneBay.com)

Contact: Kendra Enlow | [kendra.enlow@marriott.com](mailto:kendra.enlow@marriott.com)

## Downtown Miami Venues



	Area	Theater	Banquet	Classroom	Reception
Salon G	490 SqFt	40	30	24	40
Salon H	424 SqFt	28	30	15	30
Salon J	424 SqFt	28	30	15	30
Salon k	490 SqFt	40	30	24	40
Sunset Island	561 SqFt	45	40	27	50
Biscayne Island	605 SqFt	45	40	27	50
San Marco Island	619 SqFt	45	40	27	50
Bal Harbor	432 SqFt	28	30	12	30
Hibiscus Island	896 SqFt	75	50	48	80
Fisher Island	308 SqFt	55	40	24	50
Palm Island	382 SqFt	32	20	15	40
Lummus Island	605 SqFt	53	50	27	60
Dodge Island	456 SqFt	50	40	18	40
Star Island	456 SqFt	50	40	18	40
Watson Island	1,732 SqFt	120	120	80	150
Bayview Ballroom	2,529 SqFt	200	160	120	200
Executive Bayview Boardroom	497 SqFt				
Bayview Foyer	646 SqFt				70
Boardroom Foyer	236 SqFt				24



## SLS Brickell

At the center of it all – the newest addition to SLS Hotels, takes its standards of style, luxury and service to transform Downtown Miami’s skyline. A feast for the senses. A creative cocktail of sophistication and playfulness. A hotel with elements of creativity and community featuring 124 rooms, world-class décor by Philippe Starck, unforgettable dining by two award-winning chefs, an incredible pool deck, exclusive access to the SBE Collection and global concierge- SLS Brickell is an irresistible retreat in the city’s center.

### Specs:

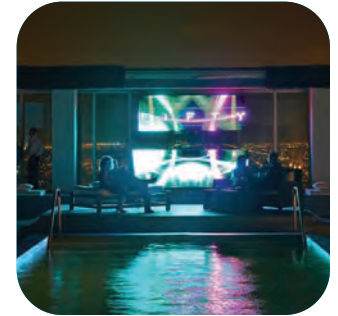
	Area	Theater	Banquet	Classroom	Reception
George I	1,734 SqFt	120	70	60	135
George II	1,173 SqFt	100	60	50	108
George III	1,371 SqFt	115	60	60	104
George I & II	2,907 SqFt	200	120	100	120
George II & III	2,550 SqFt	185	90	100	100
Grand Ballroom	4284 SqFt	295	200	180	347
Cornelius	456 sq ft	50	30	25	40
Clyde	624 sq ft	50	30	30	40

---

## Downtown Miami Venues







## W Miami

Energize your meetings or special events at W Hotels. Whatever the occasion, we'll create an atmosphere that'll engage your attendees and amplify your celebrations. We'll develop a meeting space that'll inspire and get ideas flowing. Plus, we'll make sure you have everything you need like: plasma screens; high-speed Internet access and WiFi; Internet dataports; and state-of-the-art A/V equipment. Anything else, just ask.

### Specs:

	Area	Theater	Banquet	Classroom	Reception
15th & Vine Kitchen and Bar					
The Great Room	2,666 SqFt				
Studio East	860 SqFt				
Studio West	580 SqFt				
The Whisper Lounge (Indoor/Outdoor Rooftop Lounge)	9,000 SqFt				

485 Brickell Ave, Miami, FL 33131 | 305.503.4400 | [www.wmiamihotel.com/](http://www.wmiamihotel.com/)

Contact: Rosa Aramayo | [rosa.aramayo@whotels.com](mailto:rosa.aramayo@whotels.com)









## Yve

Visiting Miami, Florida for a conference, combing through all the Miami meeting venues and in need of a hotel with event spaces and boardrooms for a corporate or business retreat? Look no further. You've landed on the perfect spot. YVE Hotel Miami offers an unforgettable work experience. Check out our event spaces and meeting rooms! Our downtown Miami meeting spaces offer the perfect blend of functionality and ambiance and feature:

Advanced Audio-Visual technology including LCD monitors, smart boards and electronic flip charts.

In-house AV and telecommunications support. Need to do a four way video conference with Boston, Shanghai and London? We've got you covered. Need some extras? We can supply extra laptops, iPads and many other useful gadgets you might require.

## Specs:

	Area	Theater	Banquet	Classroom	Reception
Inspiration I	322 SqFt	21	21	12	21
Inspiration II	374 SqFt	25	25	18	25
Inspiration III	294 SqFt	20	20	12	20

146 Biscayne Blvd, Miami, FL 33132 | 305.358.4555 | [www.yvehotelmiami.com](http://www.yvehotelmiami.com)

Contact: Yela Mas-Sanchez | [yvesales@destinationhotels.com](mailto:yvesales@destinationhotels.com)



Publication produced by:



Miami Downtown Development Authority  
200 S. Biscayne Boulevard, Suite 2929  
Miami, FL 33131  
305.579.6675  
[www.miamidda.com](http://www.miamidda.com)